



# Simplify Workflows with PRIZMA, Increase Efficiency in ERP and HR!

Simplify your business processes with Prizma! Design fast and effective workflows, and increase your efficiency in ERP and human resources management. Complete your projects on time and within budget, while redefining your way of doing business through digitalization. Prizma, with its industry-specific solutions for the construction sector, is ready to be a strong partner to take your business into the future!



# Discover the Power of Digitalization!

## 1 Digitize Your Business Processes

Reduce costs and increase efficiency. Prizma eliminates manual tasks, optimizing your operational performance.

## 3 Comprehensive Solution

An integrated management system tailored for the construction industry. Combines project management, HR, and finance processes on a single platform.

## 5 Scalable Digital Infrastructure

Suitable for businesses of all sizes. Ensures seamless adaptation and competitive edge as your needs grow.

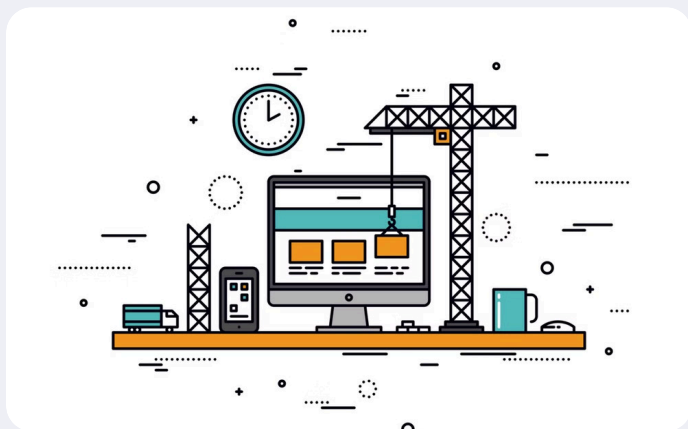
## 2 Rapid Process Design

Easily design your processes with a user-friendly interface. Optimize complex workflows in minutes.

## 4 Real-Time Monitoring

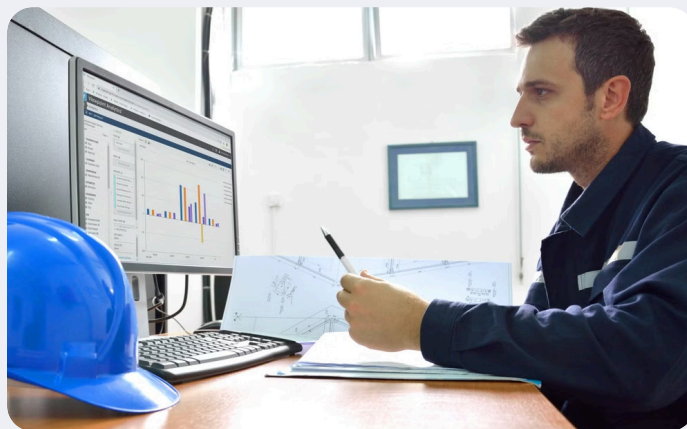
Closely track your projects with instant performance indicators. Provides clear information for strategic decision-making.





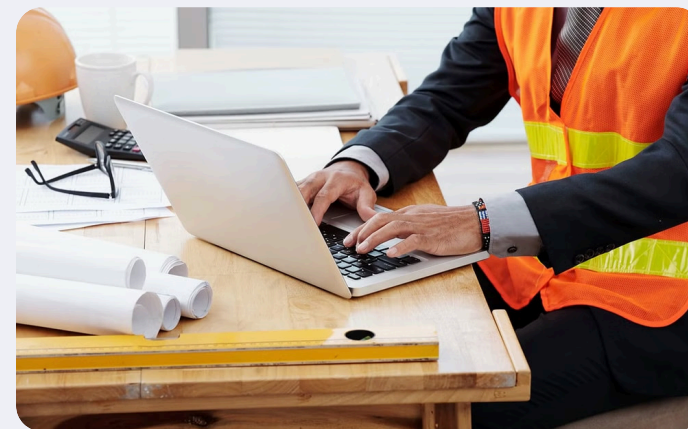
## Increased Productivity

By digitizing your processes, you can accelerate your workflow and optimize resource utilization. You will achieve time and cost savings.



## Real-Time Analytics

With instant data monitoring and reporting, you can easily track the cost and progress of your project. You can make data-driven decisions to better manage your project.



## Easy Integration

By working seamlessly with your existing systems, it provides a smooth transition in your business processes. Prizma offers seamless integration with other software.



## Additional Advantages Offered by Prizma



### **Flexible Mobile Access**

Allows you to manage your business processes from anywhere, whether on-site or remotely.



### **Advanced Permission Management**

Enhances data security with user access controls and prevents unnecessary access.



### **Customizable Reporting**

Supports your strategic decision-making processes by creating detailed reports tailored to your needs.

# Prizma's Impressive Numbers

## 50+

### **Business Partners**

Prizma has a wide network with more than 50 business partners.

## 5000+

### **Satisfied Users**

More than 5,000 users are satisfied with the solutions provided by Prizma.

## 500K+

### **Successful Purchase Processes**

More than 500,000 purchase processes were successfully completed.

## 1M+

### **Successful Business Processes**

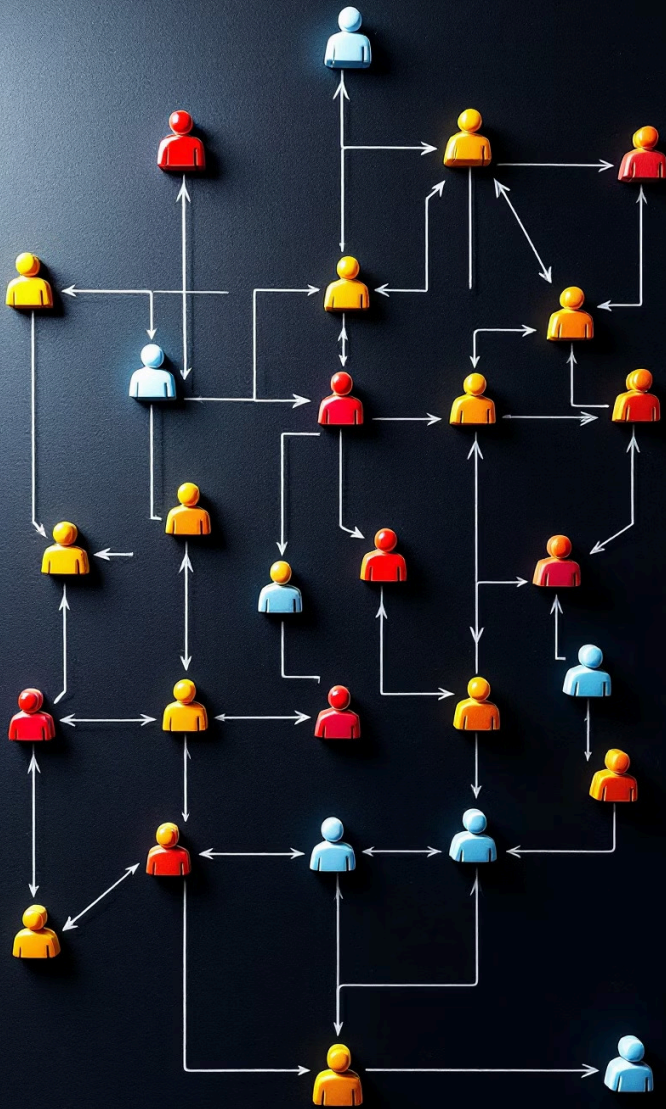
More than 1 million business processes were managed with Prizma.



# Business Processes, Financial and Operational Management with Prizma

- **Monitoring Planned Budget vs. Actual Costs:** Instantly compare your budget with actual costs to quickly identify deviations, strengthening financial control and maintaining budget discipline.
- **Unlimited Project / Site Monitoring:** Manage all your projects on a single platform without limitation on the number of projects or sites, optimizing your processes by using resources efficiently.
- **Transparency in Approval Processes:** Easily approve your requests electronically through Prizma's procurement management module. Create customized approval workflows tailored to the needs of each site.





1

## Different Process Paths

Easily approve your requests electronically with Prizma's procurement management module. Create management processes tailored to the needs of each site with customized approval routes.

2

## Effective Budget Control

Ensure budget control in the request, bid evaluation and order processes by making procurement transactions in line with project activity budgets.

3

## Past Price Analysis

Quickly check bid evaluations by analyzing your previous purchases and recent unit price averages.



# Prizma's Data Management and Analysis Features

1

## Excel Format Data Output

You can easily obtain the output of all your requests in Excel format, and you can quickly, securely, and accurately manage your financial transactions with output formats suitable for your bank payment processes.

2

## Transparent Audit

While checking the received invoice, you can track every stage of the material procurement process, inspect warehouse entries, order status, bid details, and request processes, and instantly detect potential irregularities.

3

## Integrated Process Management

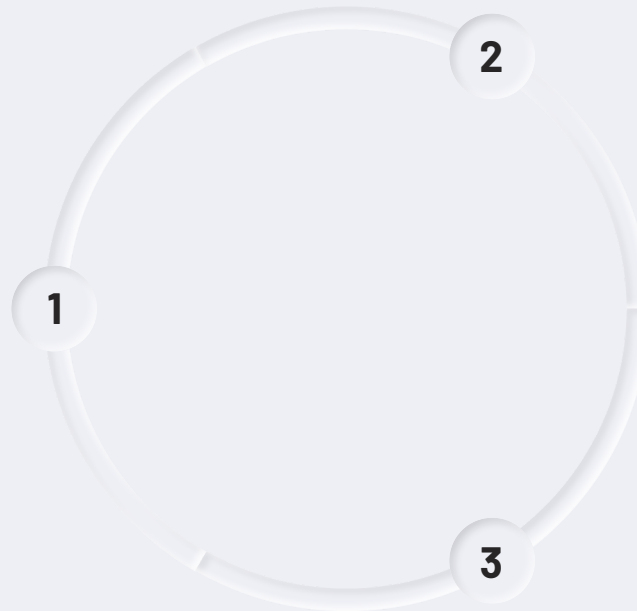
By integrating your budget, procurement, warehouse, accounting, finance, and project management processes, it allows you to easily track material procurement, movements, warehouse entries, invoices, and orders.



# Prizma's Human Resources Management Features

## Personnel Tracking by Budget Code

You can manage personnel timesheets by budget code, and track how much time each employee has worked at each site and activity.



## Transparent Personnel Processes

You can manage terminations, leave requests, and salary increases transparently, ensuring decision-making clarity by tracking approval processes.

## Current Account Tracking

You can manage supplier, subcontractor, and employer current accounts in real-time, track receivables and payables, and optimize your financial processes.

# Prizma Mobile Application



## Access Anytime, Anywhere

Prizma's mobile application allows you to manage your business processes anytime and anywhere. With its user-friendly interface and powerful features, it makes your business more efficient and controllable.



## Security and Speed

The mobile application provides data security and fast access, so you can easily track your business anytime and anywhere. Manage your business seamlessly with real-time updates and a user-friendly interface.



# Modules Offered by Prizma



## Process Module

Consists of three main processes that provide efficient workflows, time management, and cost control.



## Reports Module

Allows you to monitor and analyze your financial and operational performance in real-time.

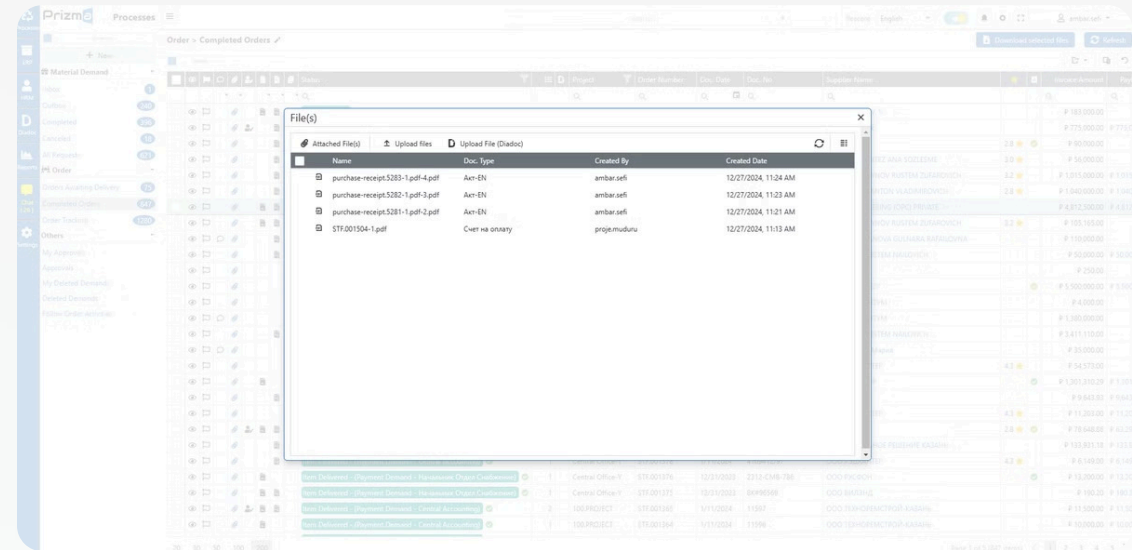
Request Code	Order Number	Demand Date	Project	Material Name	Requested Quantity
MTF.00742		2/13/2025	Central Office-Y	Арматура А240С 12мм ГОСТ 34028-2016 (11.7)	1
MTF.00742		2/13/2025	Central Office-Y	Арматура А500С 14 ГОСТ 34028-2016 11.7м	50
MTF.00742		2/13/2025	Central Office-Y	Арматура А240С 12мм ГОСТ 34028-2016 (11.7)	1
MTF.00734		2/6/2025	100.PROJECT	Швеллер стальной 220 мм	8
MTF.00734		2/6/2025	100.PROJECT	Лист А51 430 0.7*1250*2500 мм	4
		2/6/2025	100.PROJECT	Арматура А500С 14 ГОСТ 34028-2016 11.7м	5
		2/4/2025	95.PROJECT	Арматура А240С 12мм ГОСТ 34028-2016 (11.7)	1
		2/4/2025	Central Office-Y	Арматура ребристая Q28 мм	1
		2/4/2025	Central Office-Y	Арматура ø8-А500 ГОСТ 34028-2016	1
		2/4/2025	Central Office-Y	Арматура А240С 12мм ГОСТ 34028-2016 (11.7)	1
		1/31/2025	100.PROJECT	Труба стальная квадратная 100x100x5.0	623
		1/31/2025	100.PROJECT	Труба профильная 6 мет	2
		1/31/2025	100.PROJECT	Труба профильная 6 мет	256
		1/31/2025	100.PROJECT	КУПУ ПРОФИ Труба профильная 40x20x1.5x6000	14
		1/31/2025	100.PROJECT	Труба М01 (ø14x2-ø8x5ø18x7: 168x14)	32
		1/31/2025	100.PROJECT	Сантехнические товары	2321 100 22
		1/31/2025	100.PROJECT	Труба стальная резьбовая самодельная Q 40 MM	1123 301.3 821
		12/17/2024	100.PROJECT	Лист к/л 0.Ст. 08x5 ГОСТ 16523-1997 1.25x2.5м	3
		12/17/2024	100.PROJECT	ТРАПЕЗ SAC BEVAZ БОЧАЦ 621 0.5*1000*4350 MM	15
		12/17/2024	100.PROJECT	Арматура ø8-А500 ГОСТ 34028-2016	4
		12/3/2024	95.PROJECT	Арматура А500С 14 ГОСТ 34028-2016 11.7м	1
		12/3/2024	95.PROJECT	Арматура ребристая Q28 мм	1
		11/28/2024	Central Office-Y	Strong MS 1500*600 Полка (внутренняя до 240кг)	25
		11/28/2024	Central Office-Y	ОПС BINASI ПРЕТВАРКА 3 кВt 1008M2	75
		11/28/2024	Central Office-Y	КОНСТРУКЦИЯ ПРЯМОУГОЛЬНОГО АРСИЧНОГО АНГАРА 20X30М ДЛЯ Г КУРТОККА	50
		10/28/2024	Central Office-Y	ПРОФИЛ L 30*30*3 мм Утолщ металлочесный Г-образный 30*30*3 MM	100
		10/28/2024	Central Office-Y	SAC ТРАПЕЗ С21 0.55*1015*3000 MM	3000 100 29
		10/24/2024	Central Office-Y	Грунтовка серый 2.5L	11

# Prizma's Document Management System



## Document Management System (DMS)

Prizma's Document Management System accelerates your workflows by providing advanced features that allow you to easily access, process, add, and remove documents at every stage of your processes. Through effective document management in ERP and accounting areas, critical documents such as invoices, contracts, delivery notes, and order forms are securely stored and integrated with the relevant business processes. Documents can be viewed and updated by the relevant teams in accordance with authorization rules, reducing manual operations and error rates. Prizma supports the digital transformation of businesses, making document-based processes more efficient and controlled.



Project	Doc. Date	Type	Number	Amount	R.D. Amount	Doc. No.	Description	Contract	Warehouse	Special Code	Delivered By Employee
100.PROJECT	2/14/2025	Consumable Receipt	005326	P 1,557,811.71	\$ 18,314.04				100.PROIE		
100.PROJECT	2/4/2025	Consumable Receipt	005318	P 750,000.00	\$ 7,504.25				100.PROIE		
97.PROJECT	1/15/2025	Defective Repair Outlet Receipt	005303	P 87.20	\$ 0.95				TOBOLSK DGP108		
97.PROJECT	2/1/15/2025	Missing Count Receipt	005302	P 141,308.95	\$ 1,568.33				TOBOLSK DGP108		
98.PROJECT	1/1/15/2025	Consumable Receipt	005301	P 40,000.00	\$ 386.71				98.PROIE		
98.PROJECT	1/1/15/2025	Excess Count Receipt	005300	P 40,000.00	\$ 386.71	34543			98.PROIE		
98.PROJECT	1/1/15/2025	View Receipt	005299	P 30,000.00	\$ 290.03				98.PROIE		
98.PROJECT	1/1/15/2025	Change Auction Receipt	005296	P 45,000.00	\$ 435.04	45789			98.PROIE		
98.PROJECT	1/1/15/2025	Copy Receipt	005297	P 60,000.00	\$ 580.06	4567			98.PROIE		
97.PROJECT	1/1/14/2025	Lock Receipt	005296	P 30,000.00	\$ 292.09	56544			INSAAIT PROJIE MALZEME AMBARI		
Central Office-Y	3/11/28/25	Cancel Receipt	005277	P 90,383.00	\$ 896.80	54656	ingait malzemeleri - STF-001474		Central Office		
100.PROJECT	2/12/12/2024	Refresh Receipt	005276	P 7,630.00	\$ 73.88	474	Для установки окон - STF-001311		100.PROIE		
100.PROJECT	2/12/12/2024	Consumable Receipt	005275	P 7,630.00	\$ 73.88	474	Для установки окон - STF-001311		100.PROIE		
Central Office-Y	2/11/28/2024	Consumable Receipt	005272	P 146,744.80	\$ 1,358.62	76787	ingait malzemeleri - STF-001474		Central Office		
97.PROJECT	2/11/20/2023	Consumable Receipt	005271	P 1,497.63	\$ 15.06	436		TE 9/23	TOBOLSK DGP108		
97.PROJECT	8/12/20/2023	Consumable Receipt	005124	P 18,213.00	\$ 163,381.46	0101	ATOLYV MOBILIZASHONU		TOBOLSK DGP108		
97.PROJECT	2/12/20/2023	Consumable Receipt	005123	P 10,888.30	\$ 987,483.22	0100	CELIK ISHARI		TOBOLSK DGP108		
97.PROJECT	24/12/20/2023	Consumable Receipt	005122	P 516,618.20	\$ 46,361,510.22	0099	SAHA OFISI ICIN		TOBOLSK DGP108		
97.PROJECT	4/12/20/2023	Consumable Receipt	005121	P 9,577.95	\$ 858,155.72	0098	OFIS MALZEMESI		TOBOLSK DGP108		
97.PROJECT	26/12/14/2023	Consumable Receipt	005120	P 1,965,811.60	\$ 181,944,844.38	0097	OFIS MALZEMESI		TOBOLSK DGP108		
97.PROJECT	7/12/18/2023	Embodiment Receipt	005129	P 13,386.20	\$ 1,231,115.39	0096	SAHA OFIS MOBILIZASHONU ICIN		TOBOLSK DGP108		
97.PROJECT	14/1/8/2024	Consumable Receipt	005128	P 22,936.61	\$ 2,089,415.55	0095	SAHA TOVALETLER MOBILIZASHONU ICIN KULLANILACAK		TOBOLSK DGP108		
97.PROJECT	12/1/8/2024	Consumable Receipt	005127	P 35,046.68	\$ 3,196,739.56	0095	SAHA OFISI ICIN		TOBOLSK DGP108		
97.PROJECT	7/1/8/2024	Consumable Receipt	005125	P 37,891.40	\$ 3,411,764.06	0093	OFIS MALZEMESI		TOBOLSK DGP108		
97.PROJECT	3/12/18/2023	Embodiment Receipt	005124	P 25,103.00	\$ 1,544,132.69	0092	OFIS MALZEMESI		TOBOLSK DGP108		
97.PROJECT	4/12/20/2023	Consumable Receipt	005123	P 15,494.00	\$ 1,461,782.15	0091	KAMP ICIN		TOBOLSK DGP108		
97.PROJECT	1/1/8/2024	Consumable Receipt	005122	P 1,974.00	\$ 180,783.46	0090	GAZEL ARABANIN KAGASI ICIN KULLANILDI		TOBOLSK DGP108		

# Prizma's ERP Module

1 Materials Catalog

2 Material Transactions

3 Warehouse Transfer Transactions

4 Warehouse Entry/Exit Reports

5 Inventory Report

6 Fixed Asset Management

7 Purchase Invoices and Receipts

8 Sales Invoices and Receipts

9 Budget Management

Number	Doc. Type	Doc. No	Kymak Fig No	Date	Item	Project	Amount	R/D Amount	Description	
3	MO0579	Purchase Invoice	990709	1/27/2025	2025-01	97.PROJECT	P 8.135.83	\$ 82.85		
3	MO0570	Purchase Invoice	89089	11/23/2024	2024-11	100.PROJECT	P 480,000.00	\$ 4,941.73	OOO MTK "Meranana" - Saty Futures - Doc - 89089 - INV.01898 -	
2	MO0569	Consumable Receipt	56544	02/29/26	1/14/2025	2025-01	97.PROJECT	P 30,000.00	\$ 308.86	Devir Fij - - 005296
4	MO0564	Purchase Invoice	90546	INV.01924	1/3/2025	2025-01	100.PROJECT	P 1,017,000.00	\$ 10,470.29	sewa warehouse - STF.001508
3	MO0562	Consumable Receipt	TRANSFER-22	02/31/24	1/28/2025	2025-01	99.PROJECT	P 23,775.00	\$ 244.77	Ambar Transfer Gijng Fij - - 005314
3	MO0561	Consumable Receipt	TRANSFER-22	02/31/23	1/28/2025	2025-01	100.PROJECT	P 23,775.00	\$ 244.77	Ambar Transfer Çıkış Fij - - TRF00313
3	MO0560	Consumable Receipt	4354	02/31/23	1/28/2025	2025-01	95.PROJECT	P 4,500.00	\$ 46.33	Ambar Transfer Çıkış Fij - - TRF00311
3	MO0559	Consumable Receipt	4354	02/31/22	1/28/2025	2025-01	97.PROJECT	P 4,500.00	\$ 46.33	Ambar Transfer Gijng Fij - - 005312
2	MO0558	Consumable Receipt	02/30/27	1/27/2025	2025-01	Central Office-Y	P 350,000.00	\$ 3,561.85	Ambar Transfer Çıkış Fij - - TRF00307	
2	MO0557	Consumable Receipt	02/30/10	1/27/2025	2025-01	97.PROJECT	P 350,000.00	\$ 3,561.85	Ambar Transfer Gijng Fij - - 005310	
3	MO0555	Consumable Receipt	02/30/30	1/27/2025	2025-01	97.PROJECT	P 10,000.00	\$ 101.77	Ambar Transfer Gijng Fij - - 005309	
2	MO0554	Consumable Receipt	02/30/38	1/27/2025	2025-01	96.PROJECT1	P 5,000.00	\$ 50.88	Ambar Transfer Çıkış Fij - - TRF00308	
3	MO0553	Consumable Receipt	02/30/36	1/9/2025	2025-01	99.PROJECT	P 60,000.00	\$ 610.60	Ambar Transfer Gijng Fij - - 005306	
2	MO0552	Consumable Receipt	02/30/35	1/27/2025	2025-01	Central Office-Y	P 30,000.00	\$ 305.30	Ambar Transfer Çıkış Fij - - TRF00305	
5	MO0541	Purchase Invoice	56218	INV.01926	1/3/2025	2025-01	100.PROJECT	P 632,000.00	\$ 6,324.54	Profile - STF.001509
2	MO0531	Opening Receipt	5342		1/19/2025	2025-01	Central Office-Y	P 225.00	\$ 2.20	desc
20	MO0530	Consumable Receipt	0021	004617	12/18/2023	2023-12	97.PROJECT	P 16,381.90	\$ 159.34	Sarf Fij - BORU MONTAJ ISLERI ICIN - 004617
2	MO0529	Consumable Receipt	45789	005298	1/15/2025	2025-01	96.PROJECT	P 43,000.00	\$ 437.71	Üstevinden Gijng Fij - - 005298
3	MO0527	Purchase Invoice	12345630	INV.01931	11/14/2024	2024-11	95.PROJECT	P 150.00	\$ 1.46	OOO "YIĞİP" - Alım Futures - Doc - 123456 - INV.01931 -
2	MO0525	Opening Receipt	6435423		1/14/2025	2025-01	96.PROJECT1	P 553.00	\$ 5.13	
2	MO0524	Opening Receipt	4533		1/15/2025	2025-01	97.PROJECT	P 2,553.00	\$ 24.83	
2	MO0523	Consumable Receipt	02/30/1	1/15/2025	2025-01	96.PROJECT	P 40,000.00	\$ 386.71	Sarf Fij - - 005301	
2	MO0522	Consumable Receipt	02/299	1/15/2025	2025-01	96.PROJECT	P 30,000.00	\$ 290.03	Sarf Fij - - 005399	
2	MO0519	Purchase Invoice	ghfgh48	INV.01940	1/13/2025	2025-01	100.PROJECT	P 8,750.00	\$ 93.36	Wihaw x QTI D14 - STF.001090
2	MO0517	Deposit Receipt	64656		1/11/2025	2025-01	100.PROJECT	P 1.00	\$ 0.01	
3	MO0516	Purchase Invoice	24	INV.01938	1/11/2025	2025-01	100.PROJECT	P 110,000.00	\$ 1,079.34	vc4kg - STF.001499
2	MO0515	Purchase Invoice	X159357	INV.01936	11/14/2024	2024-11	Central Warehouse	P 4,000.00	\$ 40.66	

# Prizma's General Accounting Module

1 Chart of Accounts

2 Cost Center

3 Accounting Vouchers

4 Account Transactions

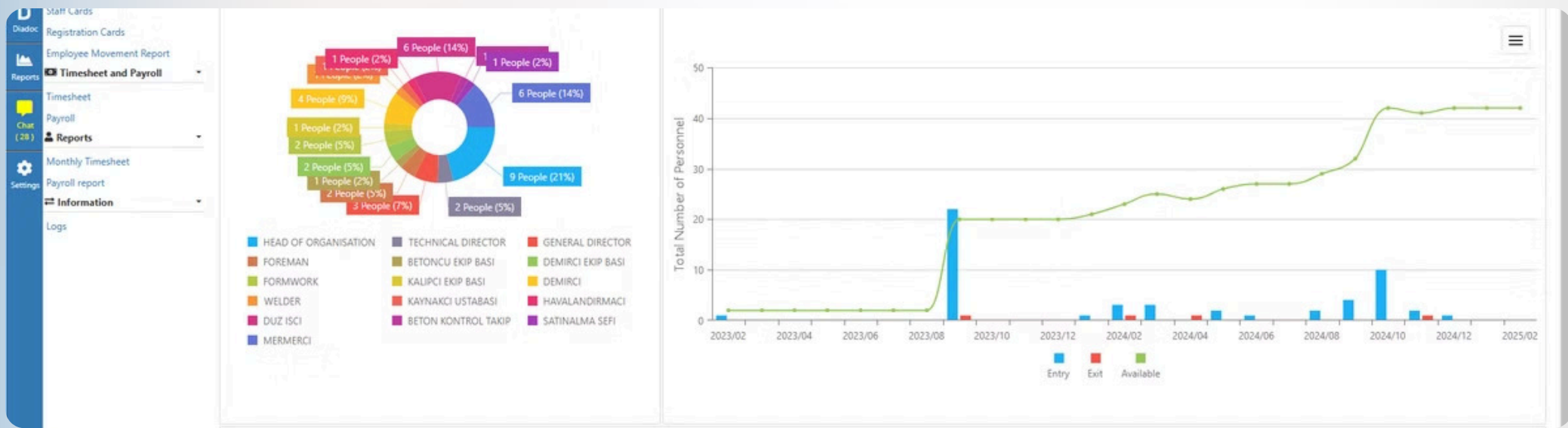
5 Trial Balance

6 Accounting

7 Matrix Control Report

8 Inter-Account Transfer

9 Account Summary



# Prizma's Human Resources Management Module

1 Graphical Reporting

2 Employee Cards

3 Personnel Records

4 Personnel Movement History

5 Attendance Slips

6 Payroll

7 Monthly Attendance and Payroll Report

8 Workplace/Department/Unit /Job and Salary Changes

9 Employee Hiring Processes

# How Prizma Works?

## Needs Analysis

The Prizma team thoroughly analyzes the needs of your business.

## Continuous Support

The Prizma team provides ongoing support and updates after the implementation.



## Customization

Prizma is configured specifically for your business based on the analysis results.

## Integration

Prizma is seamlessly integrated with your existing systems.

## Training

Your team receives comprehensive training on the effective use of Prizma.





# Frequently Asked Questions About Prizma

## **Are the materials requested for purchase in stock?**

Thanks to Prizma's modular structure, inventory control can be easily and quickly provided on a project and related warehouse basis.

## **What is the status of the requests?**

Thanks to the comprehensive and transparent screens of the Prizma Process Module, you can easily see which approvals are pending and how long they have been waiting for the relevant person's approval.

## **How can I manage material offers?**

Prizma provides detailed information about the supplier during the bidding process and allows many alternative bids to be added.

# Prizma's Sectoral Solutions

## Construction Sector

Prizma offers specially designed solutions to manage the complex structure of construction projects. It facilitates critical processes such as site management, cost control, and supply chain optimization.

## Manufacturing Sector

Designed to optimize manufacturing processes, Prizma provides increased efficiency in areas such as inventory management, quality control, and production planning.

## Service Sector

For service-oriented businesses, Prizma offers effective solutions in areas such as customer relationship management, project tracking, and resource planning.

# Prizma's Security Features

## 1 Advanced Data Encryption

Prizma protects your data using the latest encryption technologies.

## 2 Role-Based Access Control

You can manage user permissions in detail and restrict access to sensitive information.

## 3 Regular Security Updates

The Prizma team continuously strengthens the system's security and provides protection against current threats.

## 4 Data Backup and Recovery

Automatic backup and fast data recovery features ensure business continuity.



# Prizma's Customer Success Stories



## **Construction Company X**

With Prizma, they reduced project costs by 15% and shortened completion times by 20%.



## **Manufacturing Company Y**

By optimizing inventory management, they reduced waste rates by 30% and increased production efficiency by 25%.



## **Service Company Z**

They increased customer satisfaction by 40% while reducing operational costs by 20%.

# Get Ready for the Future with Prizma





# Meet Prizma and Make a Difference in Your Business



## [Request a Demo](#)

Discover the power of Prizma by requesting a free demo right away.

[info@prizmaflow.com](mailto:info@prizmaflow.com)



## **Contact Us**

Call us for any questions:

+7 495 532 12 10



## **Download the Mobile App**

Download the Prizma mobile app from the App Store and Google Play.

